



GMT MONTHLY MEMBERSHIP PROGRESS REPORT

Results as of: 6/30/2020

GMT Constitutional Area 1, Group J

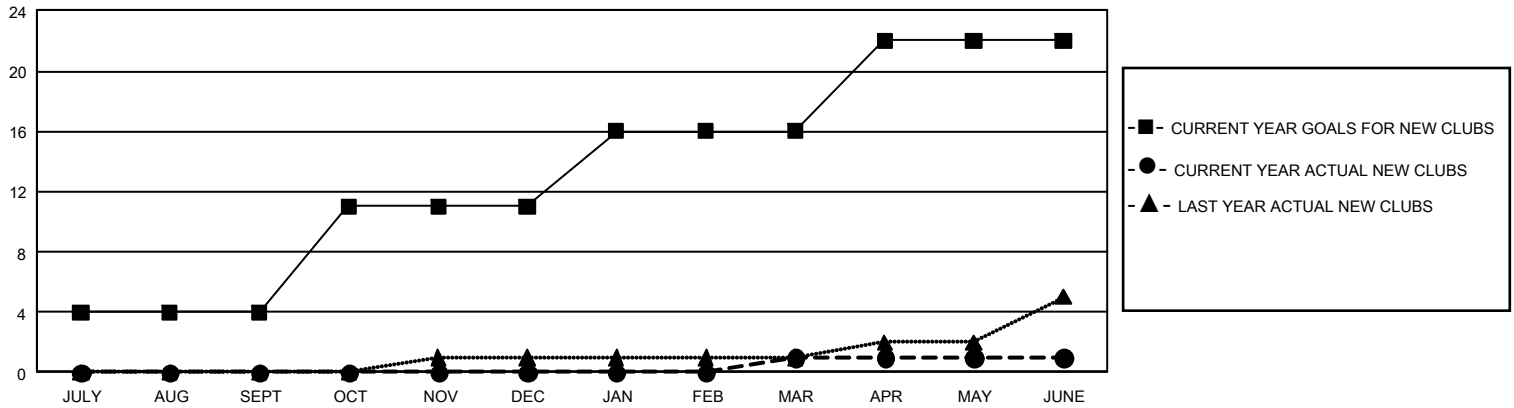
GMT: OPEN

REPORT DOES NOT INCLUDE CLUBS IN UNDISTRICTED AREAS.

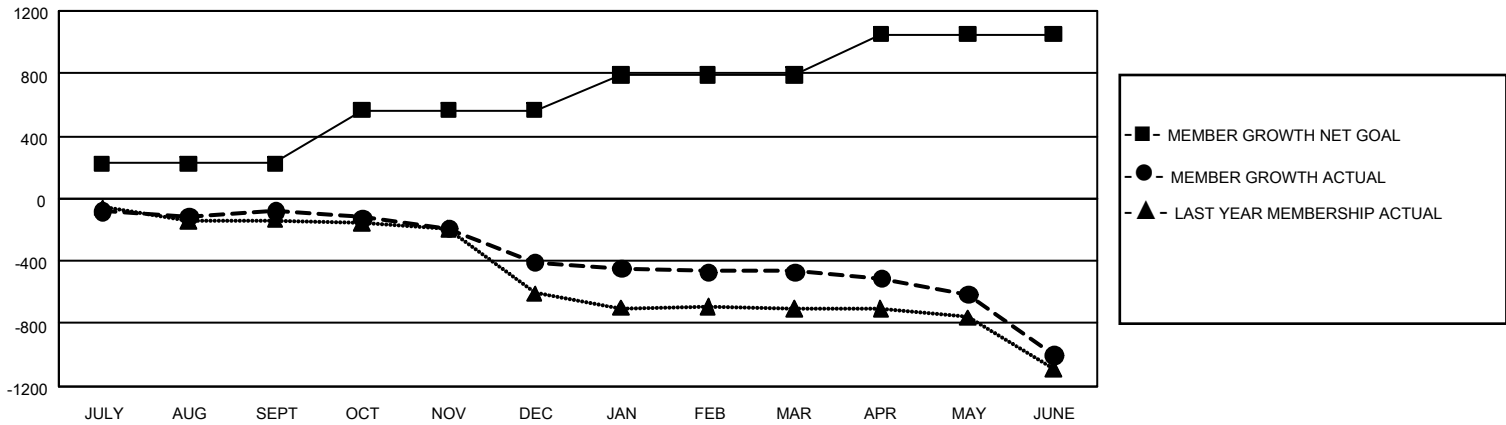
Clubs			
RESULTS FOR 2019-2020			
QUARTER	NEW CLUB GOAL	NEW CLUBS	DROPPED CLUBS
JULY/AUG/SEPT	12	0	2
OCT/NOV/DEC	21	0	8
JAN/FEB/MAR	15	1	3
APR/MAY/JUNE	18	0	6

Members			
RESULTS FOR 2019-2020			
QUARTER	MEMBER GROWTH NET GOAL	MEMBER GROWTH ACTUAL	DROPPED MEMBERS ACTUAL (including transfers)
JULY/AUG/SEPT	669	429	462
OCT/NOV/DEC	1,029	327	637
JAN/FEB/MAR	675	361	399
APR/MAY/JUNE	780	148	652

GOALS AND ACTUAL NEW CLUBS CUMULATIVE



GOALS AND ACTUAL MEMBERS CUMULATIVE



DROPPED CLUBS: 18	387 CLUBS OF 752 ADDED 1 OR MORE NEW MEMBERS	<u>GENDER DISTRIBUTION</u>	
		MALE 13,135 (72.06%)	FEMALE 5,093 (27.94%)
<u>DROPPED MEMBERS</u>		TOTAL FAMILY UNIT MEMBERS 3,395	
DECEASED 261	CLICK HERE FOR CUMULATIVE MEMBERSHIP DATA	FAMILY MEMBERS PAYING HALF DUES 1,728	
CLUB CANCELLED 75			
OTHER 1,812			
TOTAL 2,148			